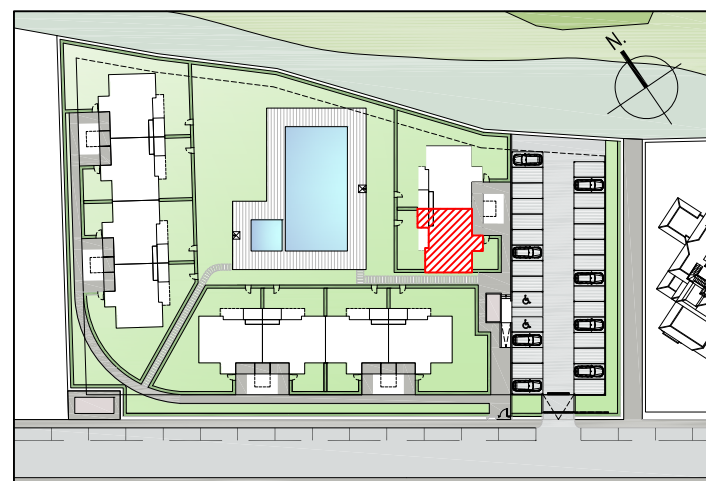
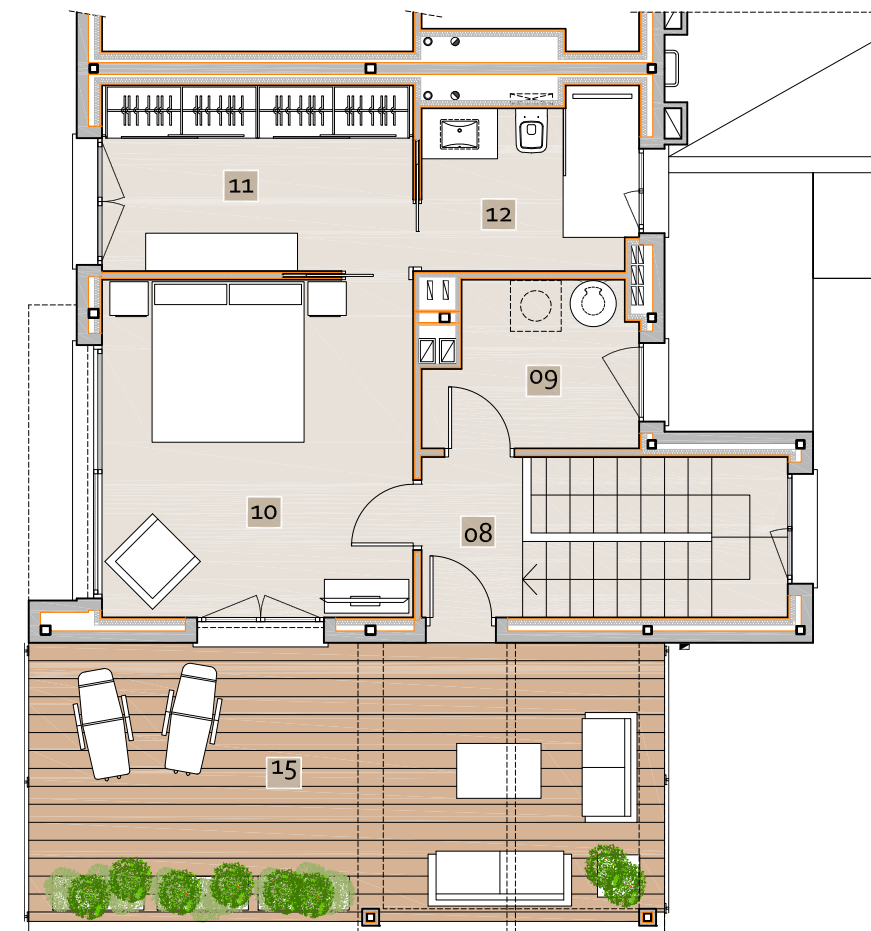
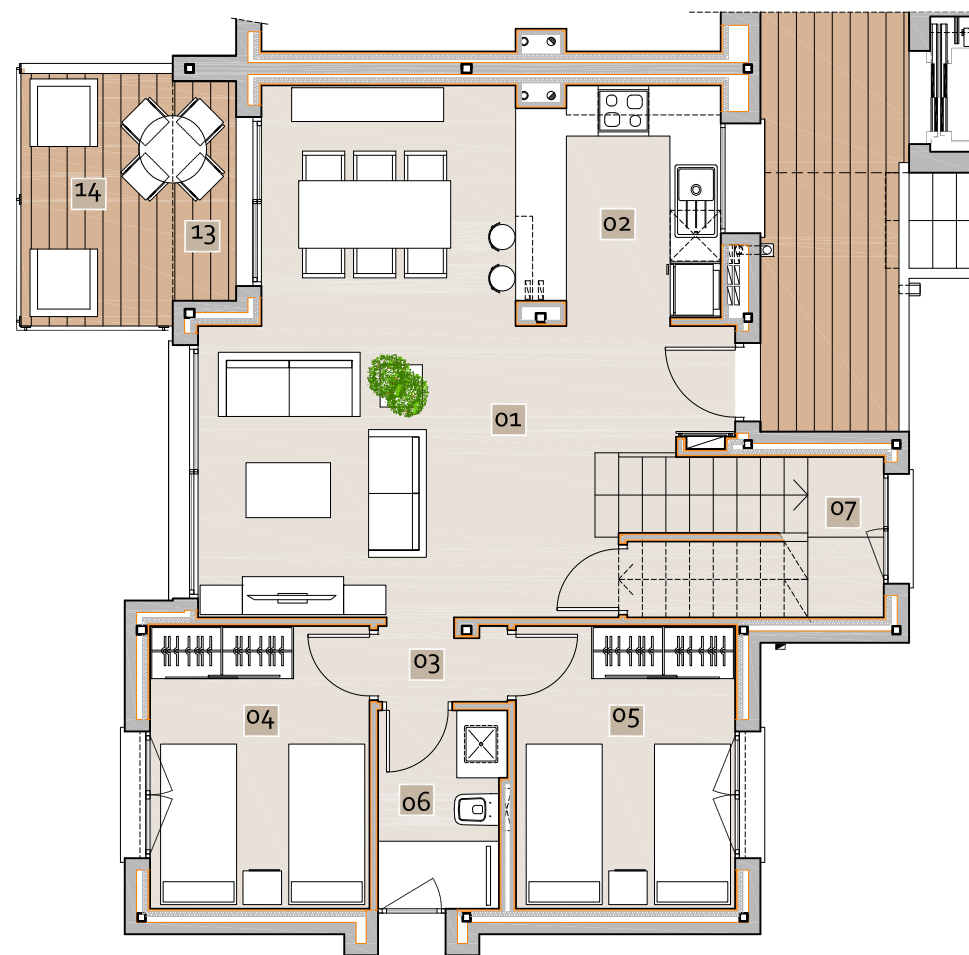


SEVILLA 7

| Superficie Cerrada | Superficie Terraza Cubierta | Superficie Terraza Descubierta | Superficie Solarium | Parte Proporcional Elementos Comunes Cubiertos | Parte Proporcional Elementos Comunes Descubiertos | Total |
|-----------------------|-----------------------------|--------------------------------|----------------------|--|---|-----------------------|
| 121.71 m ² | 2.06 m ² | 5.50 m ² | 26.26 m ² | 7.64 m ² | 1.80 m ² | 164.96 m ² |

| ESTANCIAS INTERIORES | Superficies Útiles |
|----------------------|----------------------------|
| 01 Salón -Comedor | 27.64 m ² |
| 02 Cocina | 6.52 m ² |
| 03 Pasillo 1 | 1.38 m ² |
| 04 Dormitorio 2 | 8.71 m ² |
| 05 Dormitorio 3 | 8.70 m ² |
| 06 Baño 2 | 3.45 m ² |
| 07 Escalera | 5.97 m ² |
| 08 Pasillo 2 | 2.27 m ² |
| 09 Trastero Lavadero | 4.62 m ² |
| 10 Dormitorio 1 | 14.74 m ² |
| 11 Vestidor | 8.11 m ² |
| 12 Baño 1 | 5.14 m ² |
| Total | 97.25 m² |

| ESTANCIAS EXTERIORES | Superficies Útiles |
|------------------------|----------------------------|
| 13 Terraza Cubierta | 1.95 m ² |
| 14 Terraza Descubierta | 5.35 m ² |
| 15 Solarium | 24.80 m ² |
| Total | 32.10 m² |



Apartamento 3 dormitorios Nº 321